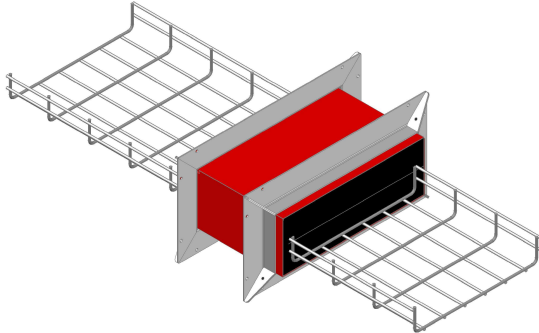




FIRECLAMP MAXI SERIES



Designed for quick and easy rerouting of service penetrations

FIRECLAMP MAXI SERIES

General

The Fireclamp (FC) MAXI Series is designed to prevent the spread of fire from one compartment to another where electrical cables, data cables, communication cables, steel pipes, insulated copper pipes, plastic conduits and limited size plastic pipes penetrate through separating walls and floors.

The Fireclamp MAXI Series consist of a steel sleeve, which contains a heat reactive intumescent material. Each unit has an integral hinges top that provides an easy, retrofit option where cables and cable trays are installed. Fireclamp mounting plates make the installation of FC MAXIs quick and simple.

Uses

FC MAXIs are suitable for use in any building where electrical cables, data cables, communication cables, steel pipes, insulated copper pipes, plastic conduits and limited size plastic pipes penetrate through fire rated compartment floors and walls, including walls of plasterboard.

Typical types of buildings where the Fireclamp MAXI Series can be implemented are banking and finance centres, data processing centres, TV and media studios, apartment complexes, hotels, office buildings, hospitals, airports and retail centres.

Fire Situation

When a FC MAXI is exposed to the heat of a fire, the graphite based intumescent material contained within the MAXI expands rapidly to close off and seal the inside of the sleeve preventing the spread of fire and smoke from one compartment to another.

KEY FEATURES

- Four (4) Hours Fire Resistance
- Approved worldwide and recognised by independent authorities
- Tested in accordance with AS1530-4, AS4072-1, BS476, UL1479, EN1366-3
- Manufactured to ISO9001:2000
- Fire tested for a wide range of cables and other service penetrations
- Available in a range of sizes
- Designed to provide protection to compartments with a penetrating cable tray.
- Very easy to install and provides total flexibility in cable routing
- Unaffected by moisture
- *Stainless steel version also available*

ALLOWABLE SERVICE PENETRATIONS

Please refer to our Technical Datasheets for the multitude of different services that have been successfully fire tested with the Abesco CT120 Cable Transit.

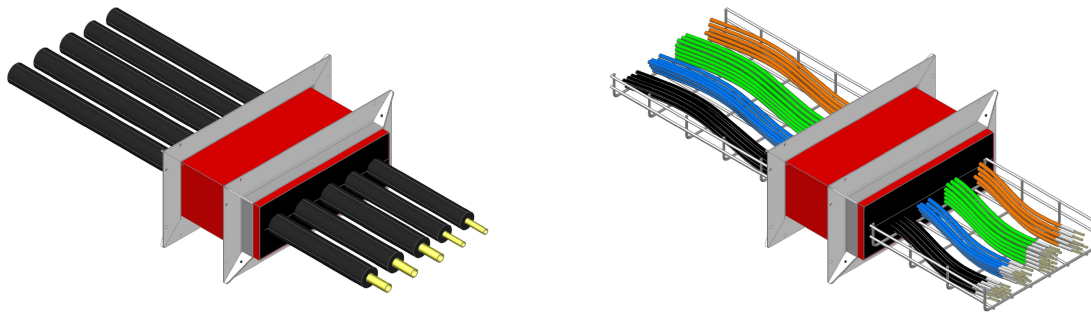
INSTALLATION

Please contact us for a copy of the installation instructions.

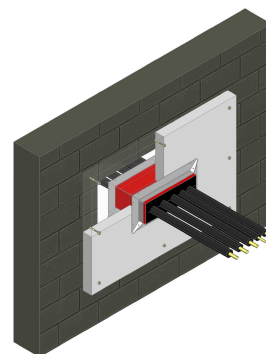
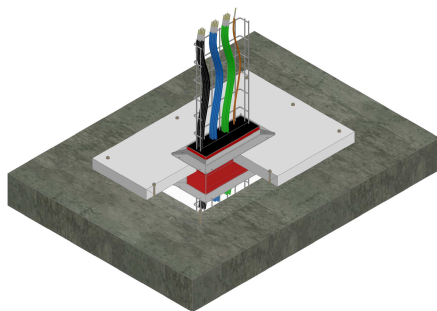
FIRECLAMP MAXI SERIES



The Fireclamp MAXI Series is designed for standard 300mm, 400mm and 500mm cable tray service penetrations. The MAXI range and have all been tested to AS 1530.4 2005. Further technical details of the Fireclamp MAXI Series are given below;



Part No.:	Description	Dimensions	Length
FCM 350-x	350mm Wide Fireclamp MAXI Assembly (complete with mounting flanges)	350 x 125mm	260mm
FCM 450—x	450mm Wide Fireclamp MAXI Assembly (complete with mounting flanges)	450 x 125mm	260mm
FCM 550—x	550mm Wide Fireclamp MAXI Assembly (complete with mounting flanges)	550 x 125mm	260mm



Each Fireclamp Maxi assembly consists of the following:

- 1 pair of mounting flanges.
- 2 foam end plugs; which are inserted after the cables have been installed to reduce smoke/air leakage.

Fireclamp MAXI assemblies are friction fit to the fire compartment barrier using specially designed CT mounting flanges, which clamp onto the transit and require no additional fixing to the wall or floor.

Note: Abesco **FR Acrylic Mastic** must be used in conjunction with installation of the Fireclamp MAXI. (Refer to our detailed installation instructions)

FIRECLAMP MAXI SERIES